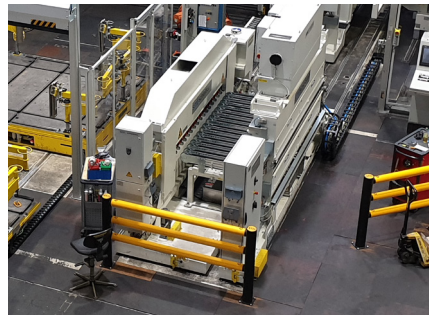


## SPRAY LUBRICATION SYSTEM FOR BLANKS AND COILS



## smt | The Company

SCHLEIFSTEIN Maschinentechnik GmbH (**smt**) is the pioneer for the cleaning and precise oiling of blanks and coils prior to the forming process. **smt** develops and manufactures re-oiling systems for press lines and coil lines for the automotive industry and similar applications for more than 40 years.

In addition, **smt** plans, builds and delivers conveyor and handling technology specially adapted to the application. For the customer it means that the automation is from a single source or that single machines can be individually tailored to the needs, and integrated in the systems in a coordinated manner.

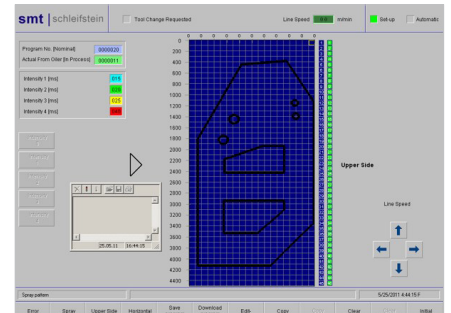
## smt | Lubrication in the Press Shop

Lubrication systems from **smt** are used if blanks or coils should be sprayed with exact quantities on defined positions, also at high passing speeds, without harming the environment. **smt**-Lubrication systems ensure best support for the forming process and saving the media required for this as far as possible.

A constant cleaning performance and a defined amount of residual oil prevent downtime and reduce costs in subsequent operations.

The Lubrication system is available in various sizes for blank or coil widths from 500 mm to 5,000 mm. A "SLIM-Oiler" version with a passing length of only 80 mm is also available. Furthermore, additions with separate tank and refill stations for several media are possible.

Depending on the requirements, the oil is applied on one or both sides as well as over the full surface or partially.



## smt | Spray Lubrication System SLS

The SLS is the most effective and economical solution for lubrication in the press shop. The lubrication system is supplied as a single machine or in combination with a washing machine, a dry cleaning system or preceding and following conveyor and automation technology as a complete system. Thanks to the various automatic spray guns developed by **smt**, optionally with pneumatic needle stroke adjustment (ASG8 PNA) for different media or with monitoring of the needle stroke for status queries (ASG8+), and with additional oil circulation for the heated spray medium, customer requirements can be optimally implemented. Also the **smt** suction units ensure a greater and more constant suction power, and therefore a reduced environmental impact from spray mist.

Integrated conveyor drives ensure that even short blanks are passed through constantly. All drives are synchronized with the conveyor technology and are controllable. Pneumatic wipers in the inlet and outlet prevent oil drops from falling onto blanks passing through.

The **smt**-spray visualization enables simple, graphic programming of the spray patterns and preselection of different spray application quantities. Existing spraying programs can be edited at any time, new spraying programs can be created in parallel. Blank contours in CAD format can be read and drawn independently on the control panel.

### The **smt** Spray Lubrication System has the following advantages and features:

- Precise oil application
- Low pressure spray technology
- Efficient oil mist separation
- Increased number of spray nozzles for smallest spraying patterns
- Constant media temperature control
- Exact application quantity control
- Precise application positioning
- High passing speeds (> 3 m/s)
- Condition Monitoring
- Comfortable and state-of-the-art operation
- Robust and compact design
- Good accessibility to all modules and components
- Easy integration in new installations and existing press lines

## **SCHLEIFSTEIN Maschinentechnik GmbH**

### **Headquarter**

**SCHLEIFSTEIN Maschinentechnik GmbH**

Siegstraße 92

D-57076 Siegen

Fon +49(0)271/77 51-0

Fax +49(0)271/77 51-150

[info@schleifstein.de](mailto:info@schleifstein.de)

[www.schleifstein.de](http://www.schleifstein.de)

### **smt North America**

smt Machines & Automation, Inc.

300 W Huron Street

Pontiac, MI 48341, USA

[service@smt-automation.com](mailto:service@smt-automation.com)

[www.smt-machines.com](http://www.smt-machines.com)

### **smt Asia**

Guangzhou smt-DC Machines & Automation Co., Ltd.

Room 3403A, 34 / F.

North Tower, The Guangzhou World Trade Center,

No. 371 - 375, Huanshi Dong

Lu, Guangzhou, China